

Data Sheet

Product ID ALV210Q1C4

PRODUCT NAME

Direct Acting Solenoid Valve of Flameproof

MODEL NO.

ALV210Q1C4

DESCRIPTION OF THE PRODUCT

Direct acting spring return normally closed solenoid valve with Ex d IIC T6 aluminium enclosure coil. According to the CNOMO-30 standard, this solenoid valve can be directly attached to various flow pneumatic valves to implement pilot control.



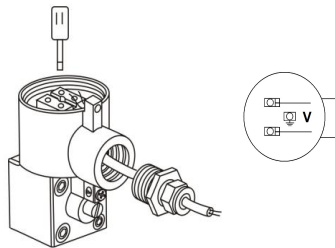
APPROVED BY



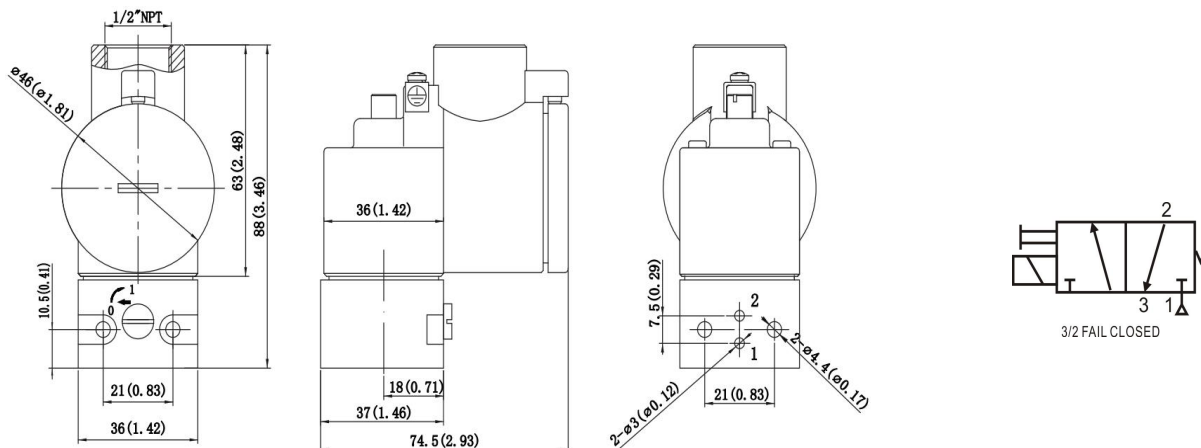
Coil Specification (C4)

Coil Enclosure	Stainless steel 316
Wiring Connector	M20-1.5 or 1/2"NPT, Terminal Strip

BODY TECHNICAL DATA

Body	Stainless steel 316	Operating Voltage	12/24VDC-3.5W 110/120/220/240VAC-4VA(50/60HZ)
Seal	Buna N	Insulation Protection	H Class Coil
Fasteners	Stainless steel	Insulated voltage	1000V
Function	3/2 direct acting, spring return, NC,	Duty factor	100% ED
Flow rate	78L/M, CV=0.08	Area Classification	Ex db IIC T6 Gb, Ex tb IIIC T85°C Db
Orifice	1.3mm	Weather Proof	IP67
Manual Override	on the body	<h3>Wiring Diagram and Operating</h3> 	
Air Ports	ø3mm		
Mounting	CNOMO interface		
Working Temperature	-20°C ~ 60°C		
Working Pressure	0 ~ 8 bar		
Working Medium	less than 40µm filtered and dried air		

DRAWING AND MOUNTING



***For continuous improvement of the product, we reserve the right to alter the dimensions, technical data and information included in this data sheet.

ALLIED AUTOMATION

www.allied-actuator.com

info@allied-actuator.com